



# PARLIAMENT SQUARE

**Access Pack**

---

# Welcome to our production of *Parliament Square*!

Thank you so much for your interest in coming to see our production of *Parliament Square*! Our team would like to ensure that every audience member's visit to the Scenic Stage Theatre is as smooth as possible and that they have a great experience watching our show.

We understand that there sometimes can be barriers to coming to see theatre for audience members with disabilities or those struggling with physical or mental health.

We hope this information is helpful and allows every audience member to feel welcome and enjoy watching our performance as much as we have enjoyed rehearsing it!

Best wishes,

The *Parliament Square* team



# Contents

## Section 1: Production details

- Page 6- Key details
- Page 7- Synopsis
- Page 8- About the production
- Page 9- Cast

## Section 2: Accessibility within the venue

- Page 11- Accessibility within the TFTI building
- Page 12- Accessibility within the Scenic Stage Theatre
- Page 13- Travelling to the theatre
- Page 14- Where is the venue?
- Page 15, 16- Travel options to the theatre
- Page 17- Route from Field Lane car park and bus stop to TFTI building

# Contents (continued)

## Section 3: Accessibility within the play

- Page 19, 20- How the performances will run
- Page 21- Safety warnings
- Page 22- Specific content warnings

## Further information

- Page 24- Behind-the-scenes and social media
- Page 25- Contact details

# Section 1: Production details

---



# Key details:



Run time: 90 mins with no interval



Performance dates: Friday 6<sup>th</sup> December at 7.30pm and Saturday 7<sup>th</sup> December at 14.30pm



Venue: Scenic Stage Theatre, TFTI Building, University of York, Campus East, Heslington, York, YO10 5DD



Venue is wheelchair accessible



This play includes difficult themes and material that some audience members may find distressing. See our [content warnings page](#) for more info



Tickets are £8 or £5 for concessions, booking required



Booking link: <https://tftv.ticketsolve.com/ticketbooth/shows/873666190>



# Synopsis of *Parliament Square*

Can the actions of one person ignite change?

Kat is an ordinary woman with a job, a husband, and a young daughter. She seems focused on keeping her head down and enjoying her ordinary life. One morning, Kat leaves everything behind and travels across the country to Parliament Square, to carry out an extraordinary act of protest. She hopes it will change the lives of everyone who sees it. But will the extremity of her actions make a difference, or will it simply destroy the lives of those around her?

James Fritz's brutal yet empathetic play examines the line between a person who is isolated in dangerous obsession, and the necessity of extreme political protest to make an impact on society. Is a sacrifice required to wake people up from their apathy?



# About the production

---

This amateur production by arrangement with Nick Hern Books is brought to you by the School of ACT at the University of York.

*Parliament Square* by James Fritz won the 2015 Bruntwood Prize. It is a drama that centres around the human relationship with political protest, both examining the power of it and the personal cost an act of protest comes at.

The show is entirely directed, produced, designed, researched, marketed and performed by third year students on the BA Theatre: Writing, Directing and Performance course for their Main Stage project.



# *Parliament Square* cast



**Kat**

Hannah Blakey



**The Voice/Jo**

Blossom Harrison-  
Hales



**Tommy**

George Light



**Catherine**

Lianna Rowlinson



**Mum**

Maddy Cox



**Physio/Ensemble**

Bella Kettle-Moore




**Colleague/ Ensemble**

Elly Nisar



**Doctor/ Ensemble**

Ali Marshall



## Section 2: Accessibility within the venue

---



# Accessibility within the TFTI building

---

The venue for this production of Parliament Square is the Scenic Stage Theatre, which is situated in the TFTI building (or the Theatre, Film, Television and Interactive Media building). This building is situated on Campus East of the University of York, opposite the Law and Management Building.

The TFTI building has the following disability access facilities in place:

- Fully wheelchair accessible
- Automatic entrance doors
- Disabled toilets on the ground floor
- Lift access to first and second floor
- Staff and Student Ambassadors on hand to help any visitor access requirements during events



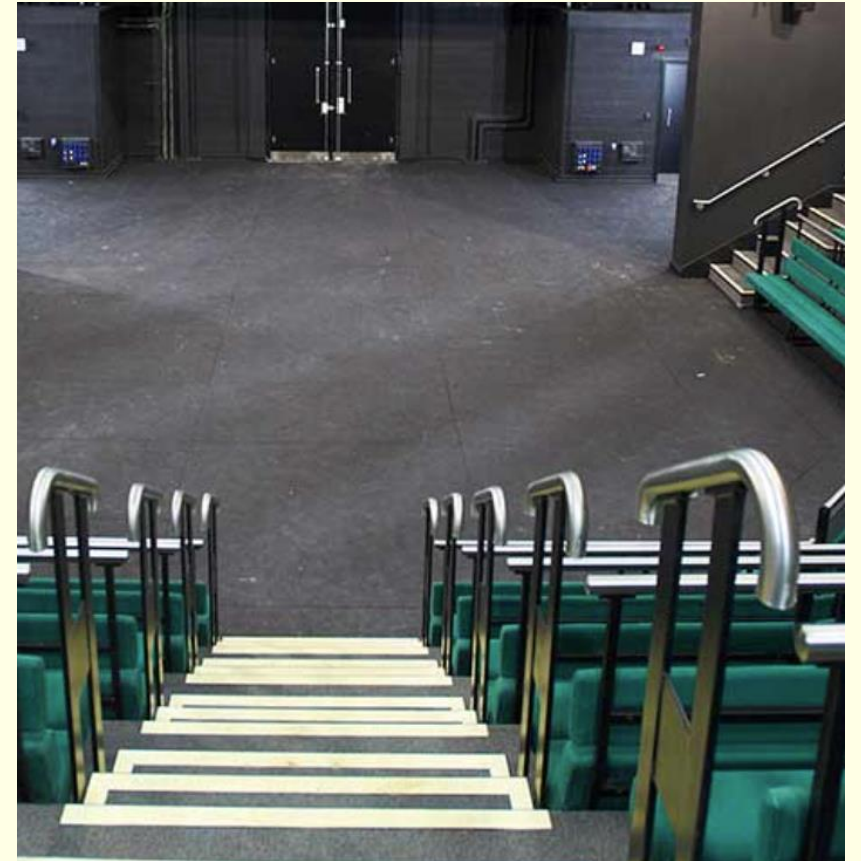


# Accessibility within the Scenic Stage Theatre

---

The Scenic Stage Theatre has the following access infrastructure and facilities in place:

- **Wheelchair accessible seating-** this is limited to the front row of the auditorium, therefore we would recommend contacting us in advance to let us know if this a requirement for you, so that we can reserve your seat
- **Wheelchair accessible entrance to auditorium**
- **The auditorium is accessible via lift**
- **Student Ambassadors on hand to help any visitor access requirements during events-** for instance if you need to leave the auditorium during the performance, speak to a Student Ambassador and they can help you to the foyer



# Travelling to the theatre

With the Scenic Stage Theatre being situated on a University Campus, finding the theatre might seem a bit mystifying to anyone not familiar with the university.

Not to worry though, as the TFTI building is very simple to find and there are plenty of travel options to get there! We will break down the options here to make things easier for you.

# Where is the venue?

This performance takes place in the Scenic Stage Theatre, which is one of the theatre spaces in the TFTI building. It is situated opposite the Law and Management building.



TFTI building address: University of York, Campus East, Baird Lane, Heslington, York, YO10 5GB.



# Travel options to the theatre:



**By car:** Pay and display parking is available at Field Lane car park, which has Blue Badge bays available. This is a 5 to 10 minute walk to the TFTI building. The route from the car park to the TFTI building is wheelchair accessible, but if you wish to be dropped off closer to the theatre, it is possible to be dropped off at the taxi rank near the Ron Cooke Hub.



**By bus:** There are frequent buses from York City Centre to Campus East, including the U1 and U2 Services. There is also the U3 Service from the Barbican via Fulford, and the U4 Service from the Designer Outlet. The Campus East stop is next to Field Lane car park.



**By cycling:** It is just a 15 minute cycle ride from Campus East to York City Centre. The University is well set up for cyclists, and Campus East has cycle paths, along with bike sheds with secure hoops and CCTV next to the Law and Management Building, available for parking your bike close to the TFTI building.

# Travel options to the theatre (continued):



**By walking:** It is possible to walk to Campus East from the city centre, though it is quite a long walk. Students typically take the route along Hull Road to get from university to town more quickly.



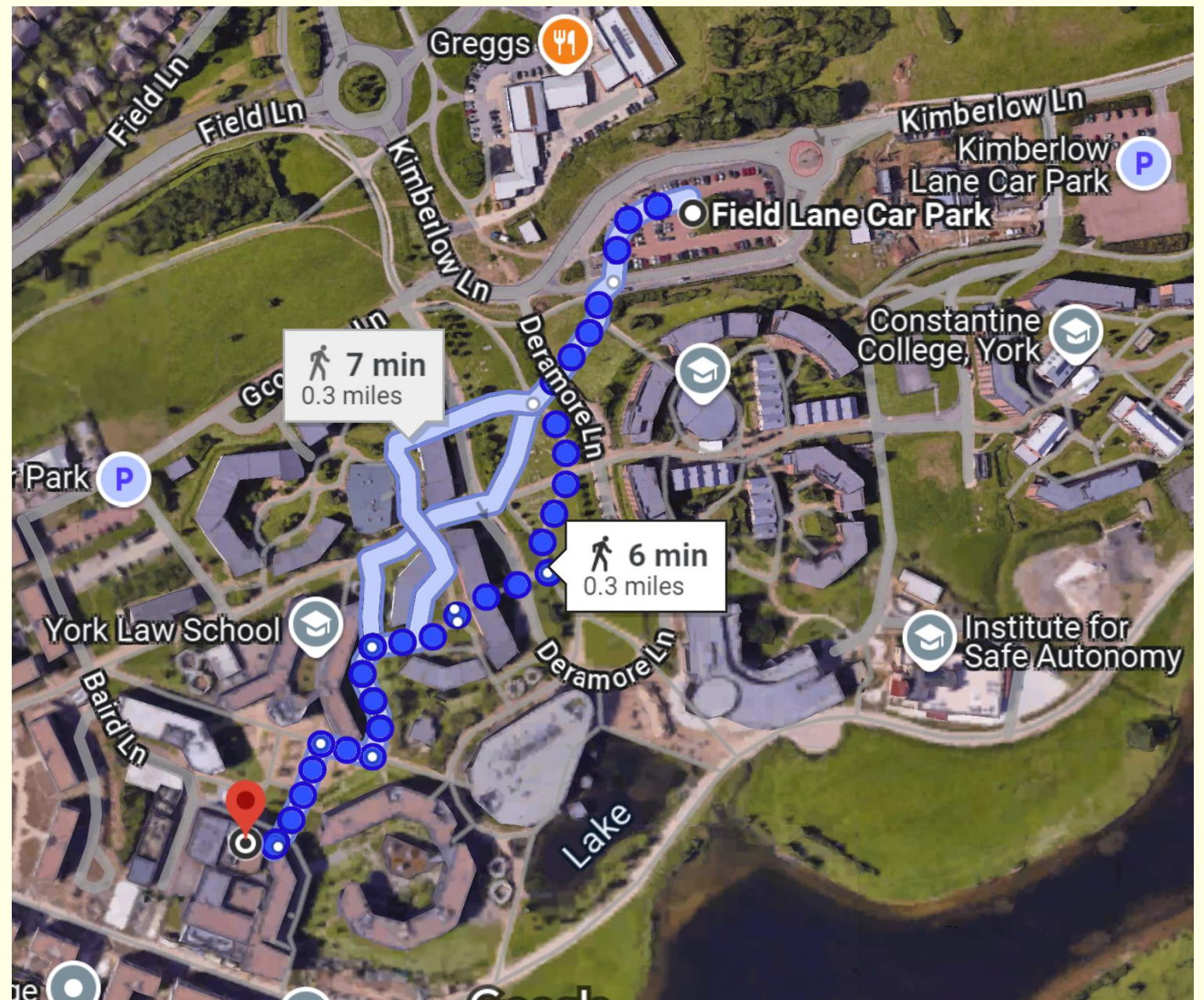
**By taxi:** There is a taxi rank on Campus East which taxis and Ubers can easily access. This runs down to the Ron Cooke Hub, where you should be able to see the lake as you get out. From there, it is less than a 5 minute walk to the TFTI building.



**By coach:** there is a coach drop-off point next to Field Lane car park.

# Route from Field Lane car park and bus stop to TFTI building

---







# **Section 3: Accessibility within the performances**

---

# How the performances will run



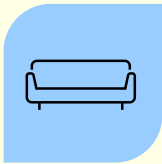
*Parliament square* has an approximate run-time of 90 minutes, which will not include an interval.



Student ambassadors and a member of the TFTI events team will be working in the foyer and the auditorium to check tickets. They will also be on hand to help our audience members if they have any questions or accessibility needs.



The box office will be open 30 minutes before each performance begins.



In the foyer there are the following facilities: toilets, vending machines, a coffee machine, a water fountain and seating areas.

# How the performances will run (continued)



Programmes will be distributed for the performance in the foyer, which will be available both in paper form and digitally via QR codes that can be scanned on a smart phone (programmes will be free of charge).



In addition to programmes, there will also be a display in the foyer relating to the play and its themes, which will be run by members of our production team.



Doors will open 15 minutes before the performance starts, so we would recommend arriving at the TFTI building at least 15 minutes before the start time, so you have time to check your tickets and find your seats.



Seating is unallocated, except if you have a seating accessibility requirement. If this is the case, either speak to a student ambassador on the day or contact the box office at [tfti-events@york.ac.uk](mailto:tfti-events@york.ac.uk) and a staff member will be able to reserve seating for you.



# Safety warnings

- **Loud noises are used throughout the performance.** We can provide foam earplugs to help block out loud noises if you need. To arrange this in advance of the show, email [tfti-events@york.ac.uk](mailto:tfti-events@york.ac.uk) or speak to one of our Student Ambassadors at reception when you arrive in the TFTI foyer.
- **Bright lights are used frequently throughout the performance**

# Specific content warnings:

---

- Visual suggestion of self-immolation (which means a person burning themselves alive)
- Visual suggestion and graphic description of severe pain and burn injuries
- Verbal references to suicide
- Depiction of suicide attempt
- Depiction of mental health issues
- Trauma and emotional distress
- The sound of a character vomiting
- Fake flames and smoke
- Swearing
- Sexual references
- Violent references

# Further information

---





# Behind-the-scenes and social media

If you wish to follow our behind-the-scenes process to get a more in-depth idea of what to expect from our production, follow us on [Facebook](#) and [Instagram](#) where we will post regular updates.



# Contact details



If you have any further questions on accessibility within this performance, please do not hesitate to contact our team via email, at [ec1994@york.ac.uk](mailto:ec1994@york.ac.uk)

If you wish to contact the venue for information, here are the contact details for the TFTI building:



Email address: [tfti-events@york.ac.uk](mailto:tfti-events@york.ac.uk)



Phone number: +44 (0)1904  
325220